

AX Plant Maintenance

MICROSOFT BUSINESS SOLUTIONS-AXAPTA

MICROSOFT DYNAMICS AX PLANT MAINTENANCE

Microsoft® Dynamics AX® Plant Maintenance is a complete and easy-to-use module that helps you efficiently manage and track the plants and equipments installed in the organization.

Key Benefits

- Help to manage and track the maintenances of the plants and equipments installed in the organization.
- Help to generate preventive and ad-hoc work orders for servicing plants and equipments.
- Help on automatic generations of preventive maintenance work orders based on user defined intervals – by year, quarter, month, day, and counter.
- Integration to financials modules – general ledger and fixed asset management.
- Obtain overall control of installed plants and equipments.

Microsoft Dynamics AX Plant Maintenance provides a strong platform to help you control and manage the preventive and ad-hoc services required for plants and equipments.

It supports a wide range of functions and empowers your company to meet the challenges of growth, while giving you the insight into your business you need to succeed in an increasingly competitive global environment.

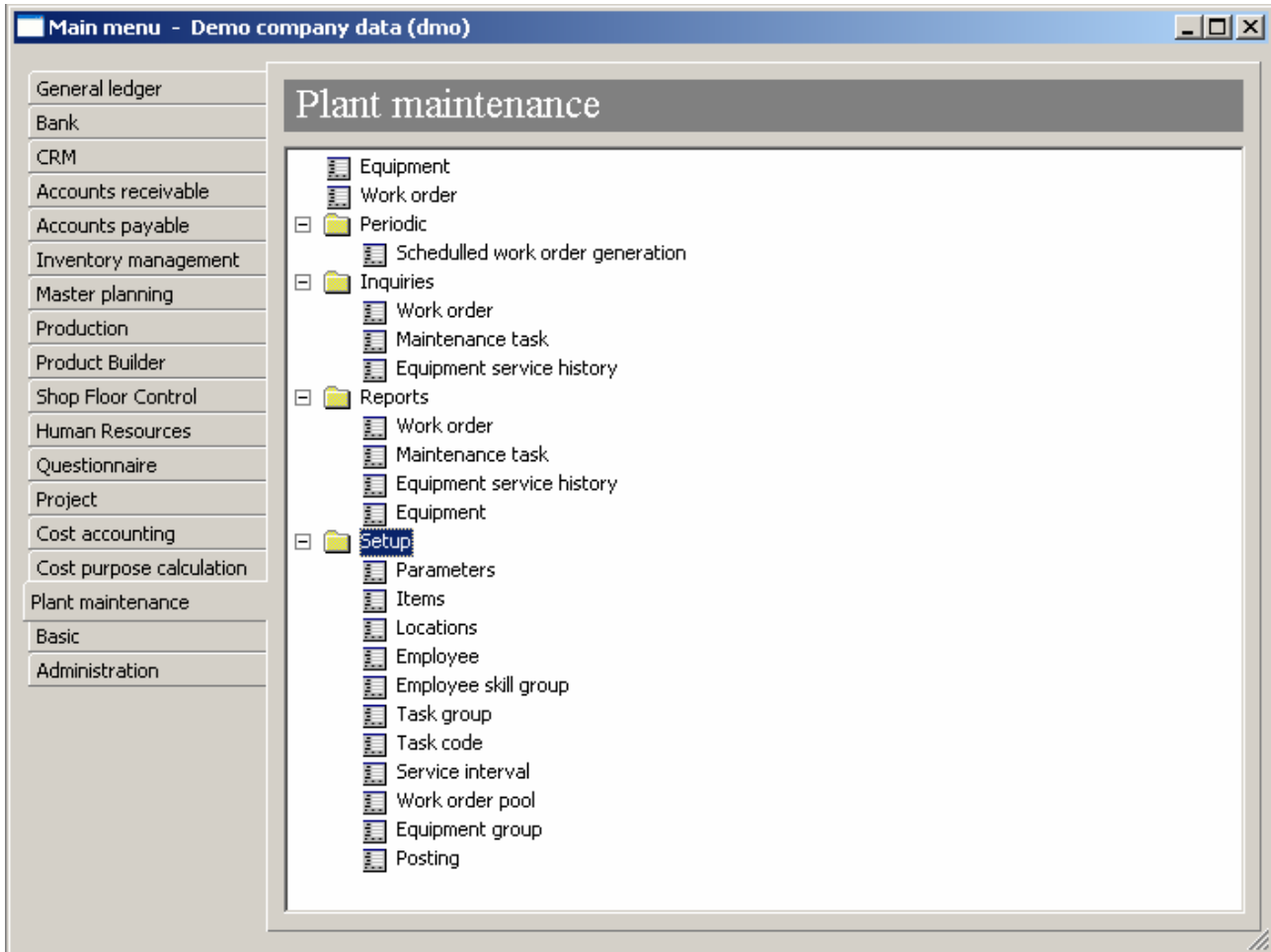
Microsoft Dynamics AX is an all-in-one solution that gives you real-time connectivity across your business. In one integrated application. Microsoft Axapta Plant Maintenance exchanges business information with many other functional areas in the solution, including Microsoft Axapta General Ledger, Microsoft Axapta Fixed Assets, and Microsoft Axapta Enterprise Portal to improve your overall business performance. Microsoft Axapta Plant Maintenance consists of the following functions:

- Equipment management: Plants and equipments management with integration to Microsoft Axapta Fixed Assets.
- Work order management: Full functions work order management for work orders generations with tasks details.
- Generation of scheduled work orders.
- Parameter setup with integration to Microsoft Axapta General Ledger for spare parts usages and service hour consumptions.
- Engineer skill mapping for task category.

Equipment management

The equipment management handles the master maintenance of all plants and equipments. The database stores information such as:

- General information.
- Technical information such as make, model, serial number, etc.



Microsoft Axapta Plant Maintenance menu structure

- Other information such as insurance related information, location, responsible, barcode, etc.
- Maintenance schedule information, where the system will calculate the next maintenance date for the plants and equipments.
- Maintenance service history.

You can maintain different groups of plants and equipments and all this plants and equipment may be integrated to the Microsoft Axapta Fixed Assets, if the module has been installed.

Work order management

With the work order management, you can create ad-hoc work order for ad-hoc plants and equipments services. In addition, you may generate the work orders in batch for all preventive maintenances.

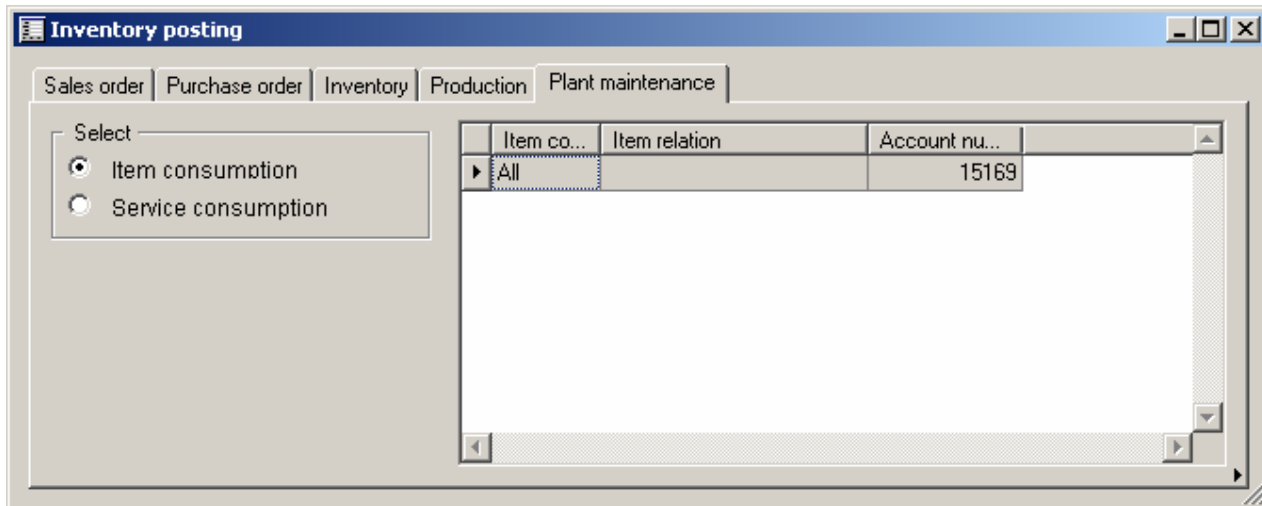
Microsoft Axapta Plant Maintenance serves as a central data repository where your employees/engineers can keep relevant work order status updated. Having accurate information lets you monitor and track the maintenance services effectively and efficiently. This may further improve plants and equipments' downtimes.

All service history records will be stored as a knowledge data base, as to help to improve the effectiveness of the engineers.

Periodic generation of work orders

Microsoft Axapta Plant Maintenance allows you to generate work orders automatically for all your preventive maintenances, which you have setup in the equipment management database.

This may eliminate the chances of late services of important preventive maintenances.



Posting Profile for Integration to Other Modules

Various useful inquiries and reports

The Microsoft Axapta Plant Maintenance provides useful and informative inquiries and reports.

Other setups

Microsoft Axapta Plant Maintenance lets you setup and map your engineers' skill with relevant task category.

In addition, you may categorize your service tasks into different task groups for ease of management.

Microsoft Axapta Plant Maintenance also lets you use the parameter setup for default setups and work order maintenance.

Integration to other modules

Microsoft Axapta Plant Maintenance supports full integration to other modules such as Microsoft Axapta General Ledger, and Microsoft Axapta Inventory Management, and Microsoft Axapta Fixed Assets.

Part of a total solution

Microsoft Axapta Plant Maintenance is part of Microsoft Dynamics AX, a customizable, scalable and global enterprise resource planning (ERP) solution that supports connectivity with your business community and provides you with a fast and powerful way to gain a competitive advantage.

For more information about Microsoft Axapta

To learn more about Microsoft Axapta, contact your local Microsoft Business Solutions office, a Microsoft Certified

Business Solutions reselling partner, and/or visit www.microsoft.com/BusinessSolutions.

About Microsoft Business Solutions

Microsoft Business Solutions, a business group of Microsoft, offers a wide range of integrated, end-to-end business applications and services designed to help small, midmarket and corporate businesses become more connected with customers, employees, partners and suppliers. Microsoft Business Solutions applications optimize strategic business processes across financial management, analytics, human resources management, project management, customer relationship management, field service management, supply chain management, e-commerce, manufacturing and retail management. The applications are designed to provide insight to help customers achieve business success. More information about Microsoft Business Solutions can be found at www.microsoft.com/BusinessSolutions.

Partner address for Microsoft Axapta Plant Maintenance

Prorsus Sdn Bhd
Unit 3A-08, Block C, Kelana Square
No. 17, Jalan SS7/26, Kelana Jaya
47301 Petaling Jaya, Selangor, Malaysia
Tel +603 7491 0790
Fax +603 7491 0799
www.prorsus.com

Key Features (Plant Maintenance)	Description
EASY TO USE	<ul style="list-style-type: none"> ▪ Intuitive layout and structure with user-adjustable menus, forms and reports with built-in help
EQUIPMENT MANAGEMENT	<ul style="list-style-type: none"> ▪ Maintain and control plants and equipments ▪ Enter all plants and equipments related information ▪ Integration to Microsoft Axapta Fixed Assets
WORK ORDER MANAGEMENT	<ul style="list-style-type: none"> ▪ Work order generation and control for engineers and plants ▪ Service history as knowledge base for future maintenance ▪ Service hour and item consumption recording. ▪ Integration to Microsoft Axapta Inventory Management and General Ledger
PREVENTIVE AND AD-HOC WORK ORDER GENERATION	<ul style="list-style-type: none"> ▪ Better control and tracking of preventive maintenance ▪ Periodic and automatic generation of preventive maintenance work orders

System Requirements

TO OBTAIN ALL OF THE FEATURES MENTIONED IN THIS FACT SHEET, THE FOLLOWING MODULES AND TECHNOLOGIES ARE REQUIRED	<ul style="list-style-type: none"> ▪ Microsoft Business Solutions–Axapta 4.0 ▪ Microsoft Business Solutions–Axapta Financial I ▪ Microsoft Business Solutions–Axapta Trade (Inventory) ▪ Microsoft Business Solutions–Axapta Plant Maintenance
---	--

18 September, 2006